

Hardin-Simmons University  
Speech-Language Pathology Graduate Program  
Graduate Student Handbook



Updated 08/2024

## Table of Contents

Mission Statement of Hardin-Simmons University	4
History of Hardin-Simmons University	4
Mission Statement of SLP Graduate	5
Communication Sciences and Disorders History at HSU	5
Faculty	6
Graduate Study at HSU	7
Vision and Strategic Plan and Goals	7
Program Goals/Outcomes	8
Student Learning Goals/Outcomes	8
Administrative Flow Chart	10
Hardin-Simmons Master of SLP	11
Hardin-Simmons University Admission Policy	11
Applying to SLP Program	11
Students with Disabilities	11
Title IX Information	12
HSU Drug and Alcohol Policy	13
Counseling Services	13
<b>HSU SLP Graduate Program Requirements</b>	14
Computer Accessibility and HSU Internet Policy	15
Leveling Information for non CSD Majors	14
<b>SLP Graduate Program Policies and Procedures</b>	15
Classroom Policy	15
Incident Weather Policy	15
Classroom/Lecture Recording	16
Dressing for Class	16
Conduct in SLP-Related Activities Off-campus	16
NSSLHA - Professional Association Memberships	16
Professional Meetings Attendance	16
Student Outside Employment	17
Transportation/Housing	17
Departmental Facilities for Graduate Students	17
<b>Graduate Advising and Curriculum</b>	17
Cohort 3 Curriculum	18
Cohort 4 Curriculum	19
Cohort 5 Curriculum	20
Cohort 6 Curriculum	21
<b>Academic Progress and Policies</b>	22
Student Expectations	22
Clinical Expectation of Graduate Students	23
Summative Assessment	23
Academic and Clinical Progress	24
KASA Standards	24

Students Seeking Accommodations	24
<b>Hardin-Simmons Academic Integrity Policy</b>	25
Program Complaints	26
Student Grievances	27
<b>Application for Graduation</b>	27
Program Degree Requirements	28
Diploma Card	28
Participation in Graduation Exercises	28
Financial Obligations to the University	28
Transcripts	28
<b>Total Cost of the Program</b>	28
Financial Information	28
Tuition, Fees, and other Expenses	29
Program Deposit	29
<b>Refund Policy - Tuition and Fees Refund Policy</b>	29
Individual Courses Dropped	29
Credit Balance	29
Withdrawal	30
University Financial Aid Policies	30
Graduate Scholarships	30
Veterans Benefits	30
<b>Graduate Student University Resources</b>	31
Students who speak English with Accents and Non-Standard Dialects	32
<b>Texas State Licensure</b>	33
Initial Licensure	33
Texas Licensing Information	33
TDLR-SLP	33
State Licensure -ASHA Guide	33
<b>Certification in Speech-Language Pathology</b>	34
Praxis Scores and Score Reports	34
<b>Signature Sheet</b>	36
Professionalism & Etiquette During Online Meetings	37

*The Master's of Science (M.S.) education program in speech-language pathology at Hardin-Simmons University is a Candidate for Accreditation by the Council on Academic Accreditation in Audiology and Speech-Language Pathology (CAA) of the American Speech-Language-Hearing Association, 2200 Research Boulevard, #310, Rockville, MD 20850, 800-498-2071 or 301-296-5700. Candidacy is a "preaccreditation" status with the CAA, awarded to developing or emerging programs for a maximum period of 5 years.*



## Welcome!

We are excited about your choosing Hardin-Simmons University Speech-Language Pathology Graduate Program to continue your academic journey. We look forward to you achieving your goal of becoming a Speech-Language Pathologist and consider it an honor to be a part of your journey.

*The mission of Hardin-Simmons University is to be a community dedicated to providing excellence in education enlightened by Christian faith and values.*

### **History of Hardin-Simmons University**

Hardin-Simmons University (HSU) provides the opportunity for a quality education in a Christian environment for all qualified men and women. Hardin-Simmons offers 3 doctoral degrees and numerous masters and baccalaureate housed within four colleges: 1. College of Health Professions; 2. Holland School of Sciences and Mathematics; 3. Kelley College of Business & Professional Studies; and 4. Cynthia Ann Parker College of Liberal Arts. HSU is fully accredited and holds membership in good standing in the appropriate agencies as listed in the University catalog. Graduates have been singularly successful in being admitted to graduate and professional schools and have been readily employed in business, education, and professional fields.

Located in Abilene, Texas, Hardin-Simmons has contributed to the development of the West and helped establish a city and area where cultural, educational, and spiritual values are highly regarded. Two other church-related universities in the city share with Hardin-Simmons an interchange of courses, library facilities, and extracurricular activities. A city civic center, symphony orchestra, three museums, community theater groups, a county coliseum, and progressive leadership afford an active cultural environment in a metropolitan population of 123,000.

Founded in 1891 as Abilene Baptist College, renamed Simmons College in honor of the first major donor, Dr. James B. Simmons, a Baptist minister of New York City, and later named Hardin-Simmons University in recognition of gifts by Mr. and Mrs. John G. Hardin of

Burkburnett, Texas, the university has become well established with a growing endowment and modern facilities.

The compact and beautiful campus is known as the Forty Acres. The Rupert and Pauline Richardson Library, the Frost Center for the Visual Arts, the Logsdon School of Theology Building and Chapel, the Johnson Building for the Kelley College of Business and Professional Studies, the Connally Missions Center, the Lee Hemphill Music Building, the Elwin L. Skiles Social Sciences Building, the Holland Health Sciences Academy Building, the new Physical Therapy Building and the newly remodeled Physician Assistant Program Building, Master of Athletic Training Building and Fletcher Fitness Center are among the latest additions to the campus.

Originally founded by the Sweetwater Baptist Association, the university has been affiliated with the Baptist General Convention of Texas since 1941.

The foundation agreement reads in part that the school's purpose shall be "To bring young men and women to Christ; to teach them of Christ; to train them for Christ."

*It is the vision of the College of Health Professions that the Hardin-Simmons University Graduate Program in Speech-Language Pathology will attract students who are committed to striving for excellence in the profession of speech-language pathology and Christian service throughout the world.*

### **Communication Sciences and Disorders History at HSU**

The Communication Sciences and Disorders undergraduate program at Hardin-Simmons University has a long and distinguished history. For over fifty years, Hardin-Simmons University has offered a baccalaureate degree in Speech-Language Pathology (Communication Sciences and Disorders). Early in the 1960's, the program was initiated by Dr. Verna Mae Crutchfield in consortium with Dr. Ima Clevenger (then) at Abilene Christian College and the West Texas Rehabilitation Center. During the early years of the program, an emphasis was placed on special education, and students in the bachelor's program could earn a Texas Teaching Certificate in Speech & Hearing Therapy. The special education certification was eliminated when the Texas Licensure Law was enacted in 1978 under the Texas Department of Health. Since those early days, the profession has become an independent allied health profession with a master's degree requirement for licensure in Speech-Language Pathology and a doctorate in Audiology.

Hardin-Simmons prepares to move toward the future by offering a Master of Science in Speech-Language Pathology. At this time, the HSU Graduate Program in Speech-Language Pathology is seeking candidacy from the *Council of Academic Accreditation (CAA)*.

*This handbook is intended to provide information about the policies and procedures of the SLP graduate program and curriculum. Graduate students are encouraged to reference the handbook when needing information regarding policies, procedures, and expectations. Please*

*consult with the program director if you have any question regarding the information contained in this handbook.*

## **College of Health Professions Speech-Language Pathology Graduate Program**

<b>Dean</b>	Dr. Janelle O’Connell Holland 325-670-1339 <a href="mailto:joconnell@hsutx.edu">joconnell@hsutx.edu</a>
<b>Program Director</b>	Dr. Dee Ann Shelton Hemphill 116 325-670-1020 <a href="mailto:deeann.shelton@hsutx.edu">deeann.shelton@hsutx.edu</a>
<b>Assistant Program Director</b>	Christine Sanchez Hemphill 113 325-670-1841 <a href="mailto:christine.sanchez@hsutx.edu">christine.sanchez@hsutx.edu</a>
<b>Clinical Director</b>	Dee Kirby Hemphill 112 325-670-1030 <a href="mailto:Dlyla.kirby@hsutx.edu">Dlyla.kirby@hsutx.edu</a>
<b>Adjunct Faculty</b>	Jon Ashby Caldwell 315 325-670- <a href="mailto:jon.ashby@hsutx.edu">jon.ashby@hsutx.edu</a>
<b>HSU Speech and Language Clinic</b>	2426 Cedar Hemphill Music Complex Office: Hemphill 116 325-670-1030

## **Graduate Study at Hardin Simmons University**

Graduate study at Hardin-Simmons University was established in 1926 by action of the Board of Trustees. Graduate programs leading to the degrees of Master of Arts, Master of Athletic Training, Master of Business Administration, Master of Education, Doctor (Ed.D.) of Leadership, Master of Physician Assistant Studies, Doctor of Physical Therapy, Master of Science, Master of Science in Speech-Language Pathology and Master of Science in Nursing are available. The policies of the Graduate School are developed by the graduate faculty and administered by the graduate council.

Students in graduate programs at Hardin-Simmons University will:

1. Increase knowledge and competency in a field of specialization.
2. Develop a spirit of inquiry and the capacity for original and independent thought.
3. Become proficient with techniques of research.
4. Grow intellectually, professionally, and culturally.

Graduate study occurs at a level of complexity and specialization that extends the knowledge and intellectual maturity of the student. It requires students to analyze, explore, question, reconsider, and synthesize old and new knowledge and skills. The curriculum affords the depth of education, specialized skill, and sense of creative independence that will allow the graduate to practice in and contribute to a profession or field of scholarship.

## **Vision**

*It is the vision of the College of Health Professions that the Hardin-Simmons University Graduate Program in Speech-Language Pathology will attract students who are committed to striving for excellence in the profession of speech-language pathology and Christian service throughout the world.*

## **Strategic Plan**

To achieve our vision, our strategic plan focuses on 6 key areas:

1. Attracting students who are committed to striving for excellence in the profession of speech-language pathology and Christian service throughout the world.
2. Faculty, staff and the University will work together to provide accurate and up-to-date information regarding the graduate program to current and prospective students.
3. Cultivating a balanced and experienced faculty to accomplish the goals and mission of the program and university and meet ASHA standards.
4. Encouraging and promoting faculty research, presentations, and other opportunities for professional growth to create a balanced and experienced faculty.
5. Providing curriculum which vigorously meets the standards for accreditation, cultivates competency and reflects the diversity of the world in which we live.
6. Providing a robust Clinical Practicum experience.

### **Program Goals/Outcomes include:**

1. Ninety-five percent of students who matriculate in the SLP graduate program will graduate within 3 years.
2. Ninety-five percent of the students will achieve clinical competency during their clinical practicum using the KASA as a benchmark for student success.
3. Ninety-five percent of students will receive a clinical practicum grade of B or higher in all clinical practicums demonstrating success in managing patients in the clinic.
4. During their clinical practicum, one hundred percent of students will understand and apply standards of ethical conduct within the field of Speech-Language Pathology in all settings as demonstrated by a score of 4 or above on their final evaluation each semester.
5. Ninety percent of students completing the Departmental Comprehensive exam will pass on the first attempt and not require remediation.
6. Eighty percent of graduates will successfully complete the National Praxis exam on the first attempt.
7. Ninety percent of students in the graduate SLP program will rate the program as good to excellent on the exit survey.
8. Ninety percent of students in the SLP program will rate their instructor's knowledge of course content as good to excellent on the exit survey.
9. Ninety percent of students in the SLP program will rate their clinical practicum experiences as good to excellent on the exit survey.
10. Ninety percent of students in the SLP program will rate their clinical supervisor's overall clinical knowledge as good to excellent on the exit survey.
11. The employment rate of the students in the graduate program will be ninety percent within one year of graduation from the program.

### **Student Learning Goals/Outcomes:**

Our Learning Outcomes will be consistent with the Knowledge and Skills Assessment (KASA) required by accreditation standards.

#### *Students will:*

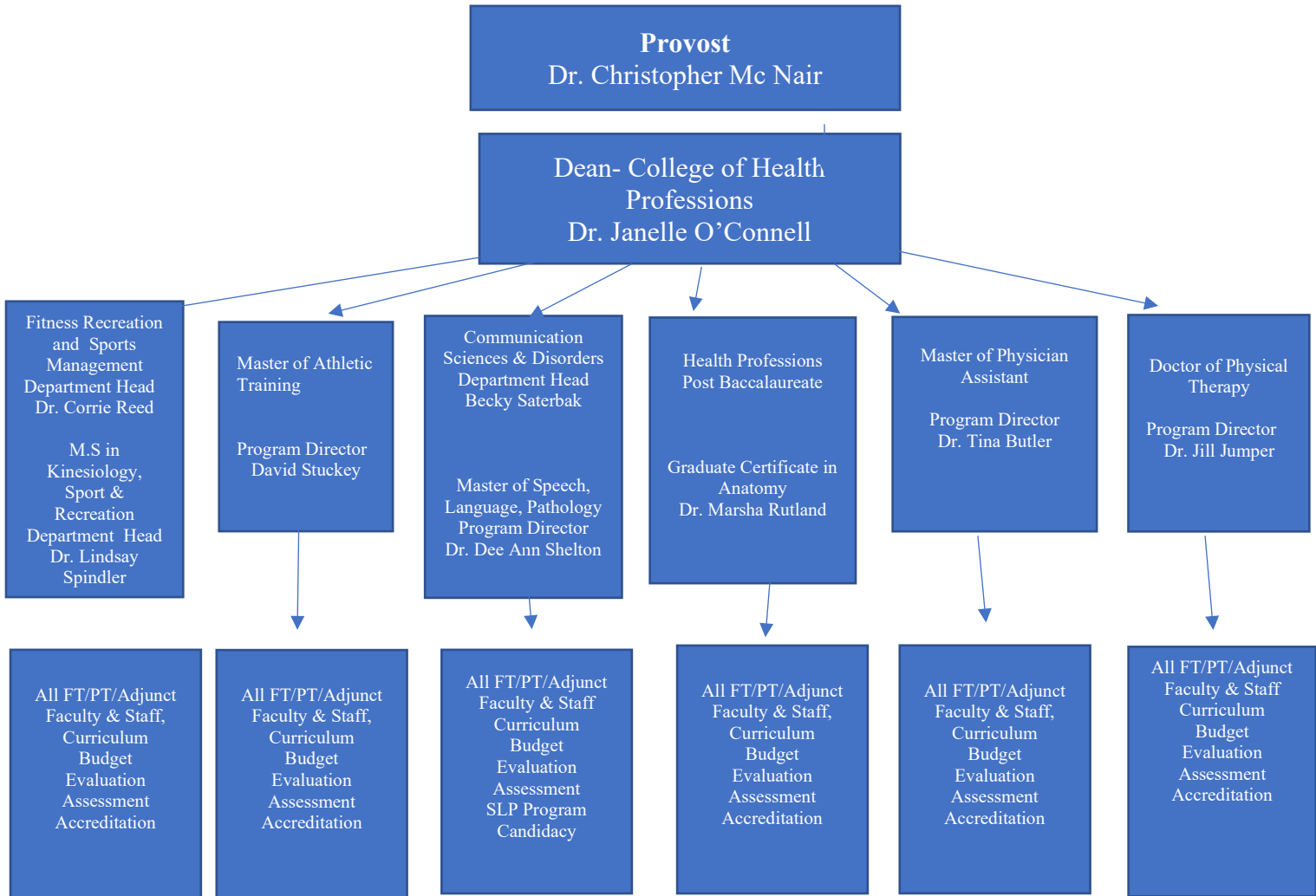
1. be able to apply the principles of the American Speech-Language and Hearing Association (ASHA) code of Ethics.
2. demonstrate knowledge of the principles of biological sciences, physical sciences, mathematics and behavioral sciences necessary to engage in clinical practice.
3. integrate knowledge of human communication and swallowing processes, including their biological, neurological, acoustic, psychological, developmental and linguistic and cultural.
4. engage in evidence-based practices.
5. demonstrate knowledge of the nature of speech, language, hearing, communication disorders and differences and swallowing disorders, including their etiologies, characteristics, anatomical and physiological aspects, acoustic, psychological, developmental, linguistic and cultural correlates.
6. effectively communicate oral and/or written information to individuals, family members/caregivers and other professionals using appropriate terminology.
7. complete coursework and clinical experiences in order to demonstrate competencies in order to receive Certificate of Clinical Competency from ASHA and licensure from the



state of Texas.

8. have opportunities to be engaged in community service with other departments within the College of Health Professions to strengthen and integrate their faith in the classroom and work setting.

## Administrative Flow Chart and Major Responsibilities College of Health Professions



## **Hardin-Simmons University Master of Speech-Language Pathology**

The master's program at HSU is a full-time two-year (five semester) 57 credit hour (41 hours of course work and 16 hours of clinical practicum) non-thesis program designed to offer students a distinctive academic and clinical experience in the field of speech-language pathology. In addition, students are required to be enrolled in clinical practicum each semester to achieve a total of 400 clinical clock hours. SLP graduate students are not eligible for part-time enrollment. Students within the College of Health Professions (COHP) participate in interprofessional activities throughout the year. These experiences will provide graduates with the skills and competencies needed to attain a Certificate of Clinical Competence in speech-language pathology from the American Speech-Language-Hearing Association (ASHA).

### **Hardin-Simmons University Admission Policy**

The graduate program will adhere to the admissions policies of Hardin-Simmons University. For example, *No student will be denied admission, suspended, or refused readmission by reason of race, age, physical or academic disability, color, sex, national origin or religion.*

HSU Admission Policy: <https://hsutx.smartcatalogiq.com/2022-2023/Graduate-Catalog>

Students will not be denied a clinical placement based on race, age, physical or academic disability, color, sex, national origin or religion.

HSU, as well as the SLP graduate program, will not require a score on the TOEFL, IETS or Duolingo for individuals who have graduated from an accredited university in the United States.

#### **Applying to the HSU SLP Program**

Applicants should complete an application and submit all requested paperwork to the Communication Sciences and Disorders Centralized Application Services (CSDCAS). <https://csdcas.liaisoncas.com/applicant-ux/#/login>

#### **Students with Disabilities**

The Office of Disability Services recognizes disability as a valued aspect of diversity and embraces access as an opportunity for hospitality, equity, and social justice. We work to ensure inclusive and sustainable learning and engagement through universally designed environments and to facilitate access, discourse, collaboration, training, and innovative programming.

Hardin-Simmons University does not discriminate on the basis of race, color, sex, national origin, age, disability, veteran status, or genetic information in its programs and activities. In accordance with the Americans with Disabilities Act (ADA) of 1990, its amendments in 2008, and Section 504 of the Rehabilitation Act of 1973, no qualified person will be denied access to, participation in, or the benefits of any program or activity operated by the University because of a disability.

HSU recognizes a student with a disability as anyone who has:

- a physical or mental impairment that substantially limits a major life activity,
- a record or history of such an impairment, or
- is regarded as having such an impairment.

Contact Disability Services Office

325-670-5842

<https://www.hsutx.edu/academics/academic-resources/disability-services/>

## **Title IX Information**

### **Introduction**

Hardin-Simmons University affirms that all members of our community are created in the image of God and therefore should be treated with dignity and respect. We do not unlawfully discriminate on the basis of any status or condition protected by applicable federal or state law. Further, we respect the inherent worth of each member of the community and do not tolerate conduct which fosters any form of harassment. We follow the profound truth found in the Golden Rule, “In everything do to others as you would have them do to you” (Matthew 7:12). With a Biblical foundation of human dignity and worth, HSU approaches issues of sexual misconduct not only as acts that may be potential violations of the law, but as conduct that is antithetical to Christian scripture. Thus, sexual misconduct is harmful not only to the individuals involved but undermines the values of the entire community.

This policy will address some of the complexities of legal requirements under Title IX, and our policy expectations in the areas of sexual misconduct, sex discrimination, sexual harassment, sexual assault, domestic violence, dating violence, and stalking. We hold to the expectation that sexual misconduct does not fit within our mission of Christian education. Violations of this policy are regarded as serious offenses of trust and integrity and will result in disciplinary action. Sexual misconduct can be committed by men or women, and it can occur between people of the same or different gender. This policy will also provide resources and help for victims and their advocates.

Hardin-Simmons University expects students to abide by the Student Conduct and Regulations Statement (see Section 26).

### **Notice of Non-Discrimination**

In compliance with federal law, including provisions of Title IX of the Education Amendments of 1972 and Section 504 of the Rehabilitation Act of 1973, Hardin-Simmons University does not illegally discriminate on the basis of race, sex, color, national or ethnic origin, age, disability, genetic information, or military service in employment. Under state and federal law, the University may discriminate on the basis of religion in order to fulfill its purpose.

The Jeanne Clery Disclosure of Campus Security Policy and Campus Crime Statistics Act (20 USC §1092(f)) (“Clery Act”) which requires colleges and universities to disclose information about crime on and around their campuses. This includes recent amendments to the Clery Act under the Campus SaVE Act and Violence Against Women Act, which deals with incidents of sexual assault, domestic and dating violence, and stalking.

## University and Departmental Policies

### **HSU Drug and Alcohol Policy**

In 2015 HSU became a tobacco-free, smoke free campus. HSU seeks to foster an alcohol, tobacco, and drug-free environment in which to work, live, learn, and grow. As a Christian university, alcohol, tobacco, and drug use is approached with a combination of compassion, encouragement, directness, and concerned firmness. HSU follows the 1 Corinthians 6:19-20 message that all were bought with a price, therefore all people should honor God with their bodies. An aspect of this caring approach is the consistent enforcement of the regulations regarding alcohol, tobacco, and other drugs contained within this policy. The purpose of this policy is to ensure a safe environment that is consistent with the mission of the university and its goal to foster a substance-free environment.

These policies were not created with a spirit of judgment as all students should be in a safe environment where they can learn about the personal and social consequences associated with the effects of alcohol, tobacco, and drugs. Educational programs are offered on an ongoing basis and are coordinated through the Student Life department. Prevention strategies also include efforts to change inappropriate community norms regarding alcohol and other drug use and to alter environmental factors that support inappropriate use. The university partners with the community and parents/guardians of students to help prevent abuse. Upon graduation from HSU, the hope is that all students' time here offers a balanced and educated approach to making decisions about alcohol, tobacco, and drugs after university life.

## Counseling Services

The HSU Counseling Department provides consultation, evaluation, and short-term counseling for students who are facing issues impacting their well-being. Our focus involves crisis intervention and stabilization, as well as traditional psychotherapy within a wide range of therapeutic approaches.

All full and part-time students are eligible to receive free, confidential, and voluntary counseling services at HSU, though not all students will qualify to see one of our University Counselors. Eligibility is determined by severity of need. Complete an intake form online to begin the process with our counseling services. If you do not qualify to receive counseling with the campus counselor, you will be referred to HSU Psychology and Counseling Center or other appropriate community resources.

If you have further questions, please email the Office of Counseling Services at [counseling@hsutx.edu](mailto:counseling@hsutx.edu) or visit our FAQ page.

***If you are in crisis or are concerned for the safety of yourself or someone else, call 9-1-1 or HSU Police at 325-670-1461 or go to the nearest emergency room. Please do not leave a phone or email message.***

# HSU Graduate Program Requirements

## **Suggested Minimal Admission Requirements:**

The suggested minimal admission requirements for the Master of Science in Speech-Language Pathology are as follows:

- Bachelor's degree from a regionally accredited university in Communication Sciences and Disorders (CSD) or a bachelor's degree in an area other than CSD and at least 24 credit hours of leveling coursework
- 3.0 cumulative GPA
- Three letters of recommendation written by individuals who can address your readiness to complete our graduate program, preferably from previous academic faculty and/or ASHA-certified speech-language pathologists
- Personal statement reflecting who you are and how you will contribute to our program and professional field
- GRE scores are not required this admissions cycle. However, if you have taken the GRE and you feel it represents your academic abilities, you are encouraged to include it in the application.
- TOFEL/ELTS scores (for international students)
  - A student whose native language is not English must provide an official TOEFL score of 550 on the paper-based exam, a 213 on the computer-based exam or a 79 on the internet-based TOEFL (iBT) TOEFL scores must be sent directly from the testing agency. HSU school code: TOEFL - 6268

## **Required prerequisite basic and physical science course requirements (minimum 3 credits each) for all applicants include:**

- Biological Sciences
- Physics or Chemistry
- Statistics (one 3-hour credit course)
- Social/Behavior Sciences (one 3-hour credit course)

For a list of accepted courses <https://www.asha.org/Certification/Course-Content-Areas-for-SLP-Standards/>

**All admission requirements are the same for all students regardless of their undergraduate degree.**

## **Leveling Information for non CSD Majors**

Students whose undergraduate degree is in a different field will need to complete the following prerequisite Communication Sciences and Disorders courses: Normal Speech and Language Development; Audiology; Hearing Rehabilitation, Articulation and Phonological Processes; Phonetics; Language Disorders; Anatomy, Physiology, and Neurology and Speech and Hearing Science.

Students will need to complete the ASHA required prerequisites as well as:

- Biological Sciences
- Physics or Chemistry
- Statistics
- Social/Behavior Sciences

*For a list of accepted courses for this requirement please visit the following website:*  
<https://www.asha.org/Certification/Course-Content-Areas-for-SLP-Standards/>

*All Applicants will need to submit their applications via Communication Sciences and Disorders Centralized Application System (CSDCAS). <https://mycsdcas.org/inquiryform>*

*For more information on the university Drug and Alcohol Policy, review the HSU Student Handbook. <https://www.hsutx.edu/academics/academic-resources/>*

### **Computer Accessibility**

Every graduate student is expected to have his/her computer/laptop and printer upon entry into the graduate program. Each student computer will need to have a word-processing software and email access. Students will need to check their email daily as well as Canvas. Assignments as well as other materials for class are frequently posted on Canvas.

*Students should review the HSU internet policy located in the university Student Handbook. <https://www.hsutx.edu/academics/academic-resources/>*

## **SLP Graduate Program Policies and Procedures**

### **Classroom Policy**

Students are expected to attend class and be prepared to participate. Frequent tardiness can impact your course grade. Hardin-Simmons University provides an attendance policy each semester which will be in your syllabus. In addition, each professor may have additional attendance requirements. These policies will be distributed to the student and discussed at the beginning of each new semester. No cell phone use during class – please review the **UNIVERSITY POLICY ON ELECTRONIC DEVICES IN CLASS**. Please check with your instructor for additional information regarding cell phone use during class. No audio/video recordings of class may be made without the instructor's consent. Everyone should always demonstrate common courtesy and respect to their peers and instructors.

### **Inclement Weather Policy**

If the President of the University closes the University due to inclement weather, an announcement will be made to the local news media. For current information check the Hardin-Simmons University website (<https://www.hsutx.edu/>) and/or contact the course instructor. Closure of the University does not affect clinical practicum experience responsibilities if the clinical site is open. When on off-campus clinical assignments, check with the clinical site first and then proceed by following the directions of the Director of Clinical Education.

## **Classroom Recording**

Student should not record a classroom discussion for any reason without prior permission from the instructor.

## **Dressing for class**

Students are expected to dress appropriately for class. Students are encouraged to wear casual clothing (e.g., slacks and shirts) to class each day. Jeans are acceptable for class as long as they are not faded and/or torn.

## **Conduct in SLP-Related Activities Off Campus**

The Codes of Professional and Academic Conduct extend beyond the classroom and campus to hospitals, community clinical facilities, public and private schools, and various other practicum settings and locations where our students and faculty may engage in professional activities as well as NSSLHA activities patient confidentiality and sensitivity to the needs of all patients, including those with different cultural backgrounds, are critical in order to contribute to excellent patient care.

*In practicum settings, observers are also responsible for upholding the ASHA Ethical Standards as well as policies and procedures of the HSU Speech-Language Clinic.*

## **Professional Association Membership for Students**

Students enrolling in the Hardin-Simmons University Graduate program are encouraged to join the Graduate National Student Speech Language Hearing Association (NSSLHA). Each student is responsible for their own fees for this organization.

For more information about NSSLHA: <https://www.asha.org/students/>

## **Professional Meeting**

Throughout each semester the Graduate SLP Program will provide an opportunity for professional development for the graduate students. Undergraduate students are welcome and encouraged to come and hear presentations by professionals in the field of Speech-Language Pathology as well as other related fields. ***Professional dress is required at all professional development sessions.***

## **Inter-professional**

Each semester the College of Health Profession provides Inter-Professional Development opportunities for interprofessional activities for students within the COHP. All SLP graduate students are expected to participate in these activities.

Students are encouraged to attend the yearly conference of the Texas Speech-Language-Hearing Association (TSHA). Students will need to make their own travel arrangements and pay for their own registration, food, lodging and travel unless other arrangements are made. If a student is presenting at a conference, they may apply for funds to attend the conference.



## **Student Outside Employment**

While enrolled in the Speech-Language Pathology graduate program at Hardin-Simmons University, students are expected to devote their maximum efforts to successful completion of the professional curriculum. The Department strongly discourages but does not prohibit part-time employment. Student employment schedules are not a consideration in the Department's scheduling of classes, reviews, examinations, practicum experiences, experiential meetings, and/or other curricular activities. Students are expected to attend all class meetings and meet all expectations. Students not prepared to dedicate all energy to successfully completing the graduate program should consider re-applying for Hardin-Simmons University Speech-Language Pathology graduate program at a later date.

## **Transportation/Housing**

Clinical practicum experiences throughout the graduate program are offered at off-campus sites. Students must provide their own transportation to practicum sites and classroom activities. It is therefore required that all graduate students have a means of transportation. This includes a valid driver's license and current auto liability insurance if transportation is to be provided through a personal vehicle.

Graduate students are responsible for their own housing during all phases of the professional curriculum. Information on available campus housing can be viewed on <https://www.hsutx.edu/student-life/living-on-campus/>

## **Departmental Facility for Students**

### **Graduate Student Workroom**

A workroom has been designated for student and faculty use. This room is for preparation of therapy and/or class projects. The workroom has a large worktable, therapy supplies (e.g., glue, scissors, card stock, markers, paints...), and copy machine. Students are encouraged to use this room to work on therapy materials as well as study. Please remember to return supplies where they belong. Be professional and courteous and clean up your area – it is your responsibility.

Lamination is free of charge for all therapy materials. All lamination is completed on Friday afternoon. Please do not ask the student worker to cutout laminating for you.

### **Student Lockers**

A limited number of lockers are available on a first come basis for students to use. If you want a locker, please sign up with the student worker.

## **Graduate Advising and Curriculum**

### **Academic Advising**

Each semester students will meet with the Program Director and/or designee to verify that they are on schedule for graduation and completing all courses and clinical practicum with a “B” or higher. During the academic advising meeting, future courses will be discussed.

**Graduate Curriculum Sequence - Fall Admissions  
Cohort 3 - 2023-2025**

<i>First Graduate – Fall Semester</i>		
<i>Course</i>	<i>Course Title</i>	<i>Hours</i>
SLP 6308	Research Methods in Communication Disorders	3
SLP 6310	Pediatric Language Disorders Assessment and Intervention	3
SLP 6315	Aphasia and Related Disorders	3
SLP 6212	Clinical Assessment	2
SLP 6301	Clinical Practicum 1	3
<b>Total Semester Hours</b>		<b>14</b>
<i>First Graduate – Spring Semester</i>		
SLP 6325	Phonological Disorders	3
SLP 6332	Dysphagia and Related Disorders	3
SLP 6362	Language and Literacy (School-Age Disorders)	3
SLP	Evidence-Based Practices	2
SLP 6302	Clinical Practicum 2	3
<b>Total Semester Hours</b>		<b>14</b>
<i>May Short Course</i>		
SLP 6241	Multi-Cultural Aspects	2
<b>Total Semester Hours</b>		<b>2</b>
<i>Summer</i>		
SLP 6403	Clinical Practicum 3	4
<b>Total Semester Hours</b>		<b>4</b>
<i>Second – Fall Semester</i>		
SLP 6338	Voice and Fluency	3
SLP 6384	Special Topics in Speech Pathology	3
SLP 6368	Graduate Seminar	3
SLP 6304	Clinical Practicum 4	3
<b>Total Semester Hours</b>		<b>12</b>
<i>Second – Spring Semester</i>		
SLP 6358	Special Populations and AAC	3
SLP 6354	Motor Speech Disorders	3
SLP 6220	Counseling and Interviewing in CSD	2
SLP 6305	Clinical Practicum 5	3
<b>Total Semester Hours</b>		<b>11</b>
<b>Total Program Hours</b>		<b>57</b>
<i>Elective</i>		
SLP 6379	Independent Study	3

**Graduate Curriculum Sequence – Spring Admissions  
2024-2025  
Cohort 4**

<i>First – Spring Semester</i>		
SLP 6325	Phonological Disorders	3
SLP 6332	Dysphagia and Related Disorders	3
SLP 6362	Language and Literacy (School-Age Disorders)	3
SLP	Evidence-Based Practices	2
SLP 6301	Clinical Practicum	3
	<b>Total Semester Hours</b>	<b>14</b>
<i>First – Fall Semester</i>		
<i>Course</i>	<i>Course Title</i>	<i>Hours</i>
SLP 6308	Research Methods in Communication Disorders	3
SLP 6310	Pediatric Language Disorders Assessment and Intervention	3
SLP 6315	Aphasia and Related Disorders	3
SLP 6212	Clinical Assessment	2
SLP 6302	Clinical Practicum	3
	<b>Total Semester Hours</b>	<b>14</b>
<i>Second – Spring Semester</i>		
SLP 6358	Special Populations and AAC	3
SLP 6354	Motor Speech Disorders	3
SLP 6220	Counseling and Interviewing in CSD	2
SLP 6304	Clinical Practicum	3
	<b>Total Semester Hours</b>	<b>11</b>
<i>May Short Course</i>		
SLP 6241	Multi-Cultural Aspects	2
	<b>Total Semester Hours</b>	<b>2</b>
<i>Summer</i>		
SLP 6403	Clinical Practicum	4
	<b>Total Semester Hours</b>	<b>4</b>
<i>Second - Fall Semester</i>		
SLP 6338	Voice and Fluency	3
SLP 6384	Special Topics in Speech Pathology	3
SLP 6368	Graduate Seminar	3
SLP 6304	Clinical Practicum 4	3
	<b>Total Semester Hours</b>	<b>11</b>
	<b>Total Program Hours</b>	<b>57</b>
<i>Elective</i>		
SLP 6379	Independent Study	3

**Graduate Curriculum Sequence – Fall Admissions  
Cohort 5 – 2024-2026**

<i>First Graduate – Fall Semester</i>		
<i>Course</i>	<i>Course Title</i>	<i>Hours</i>
SLP 6308	Research Methods in Communication Disorders	3
SLP 6310	Pediatric Language Disorders Assessment and Intervention	3
SLP 6315	Aphasia and Related Disorders	3
SLP 6212	Clinical Assessment	2
SLP 6301	Clinical Practicum 1	3
<b>Total Semester Hours</b>		<b>14</b>
<i>First Graduate – Spring Semester</i>		
SLP 6325	Phonological Disorders	3
SLP 6332	Dysphagia and Related Disorders	3
SLP 6362	Language and Literacy (School-Age Disorders)	3
SLP	Evidence-Based Practices	2
SLP 6302	Clinical Practicum 2	3
<b>Total Semester Hours</b>		<b>14</b>
<i>May Short Course</i>		
SLP 6241	Multi-Cultural Aspects	2
<b>Total Semester Hours</b>		<b>2</b>
<i>Summer</i>		
SLP 6403	Clinical Practicum 3	4
<b>Total Semester Hours</b>		<b>4</b>
<i>Second – Fall Semester</i>		
SLP 6338	Voice and Fluency	3
SLP 6384	Special Topics in Speech Pathology	3
SLP 6368	Graduate Seminar	3
SLP 6304	Clinical Practicum 4	3
<b>Total Semester Hours</b>		<b>12</b>
<i>Second – Spring Semester</i>		
SLP 6358	Special Populations and AAC	3
SLP 6354	Motor Speech Disorders	3
SLP 6220	Counseling and Interviewing in CSD	2
SLP 6305	Clinical Practicum 5	3
<b>Total Semester Hours</b>		<b>11</b>
<b>Total Program Hours</b>		<b>57</b>
<i>Elective</i>		
SLP 6379	Independent Study	3

**Graduate Curriculum Sequence – Spring Admissions  
Cohort 6 – 2025-2027**

<i>First – Spring Semester</i>		
SLP 6325	Phonological Disorders	3
SLP 6332	Dysphagia and Related Disorders	3
SLP 6362	Language and Literacy (School-Age Disorders)	3
SLP	Evidence-Based Practices	2
SLP 6301	Clinical Practicum	3
	<b>Total Semester Hours</b>	<b>14</b>
<i>First – Fall Semester</i>		
<i>Course</i>	<i>Course Title</i>	<i>Hours</i>
SLP 6308	Research Methods in Communication Disorders	3
SLP 6310	Pediatric Language Disorders Assessment and Intervention	3
SLP 6315	Aphasia and Related Disorders	3
SLP 6212	Clinical Assessment	2
SLP 6302	Clinical Practicum	3
	<b>Total Semester Hours</b>	<b>14</b>
<i>Second – Spring Semester</i>		
SLP 6358	Special Populations and AAC	3
SLP 6354	Motor Speech Disorders	3
SLP 6220	Counseling and Interviewing in CSD	2
SLP 6304	Clinical Practicum	3
	<b>Total Semester Hours</b>	<b>11</b>
<i>May Short Course</i>		
SLP 6241	Multi-Cultural Aspects	2
	<b>Total Semester Hours</b>	<b>2</b>
<i>Summer</i>		
SLP 6403	Clinical Practicum	4
	<b>Total Semester Hours</b>	<b>4</b>
<i>Second - Fall Semester</i>		
SLP 6338	Voice and Fluency	3
SLP 6384	Special Topics in Speech Pathology	3
SLP 6368	Graduate Seminar	3
SLP 6304	Clinical Practicum 4	3
	<b>Total Semester Hours</b>	<b>11</b>
	<b>Total Program Hours</b>	<b>57</b>
<i>Elective</i>		
SLP 6379	Independent Study	3

## Academic Progress and Policies

The Speech-Language Pathology Graduate Program uses the following grading scale. The final course/rotation grade will be recorded as “A”, “B”, “C”, or “F”.

A= 90% - 100%

B= 80% - 89%

C= 70% - 79%

F = <70%

*All students are expected to make academic progress. If a student fails to make progress, the following guidelines will be implemented.*

### Student Expectations

- *Students are required to maintain a minimum cumulative GPA of 3.0 during their time in the program.*
- *No more than 2 grades of “C” may be earned while in the SLP Program. Obtaining a third “C” or a “D” in any course will result in the option for the student to withdraw from the program with no option to return in the future OR repeat the course where the third “C” or “D” was earned with the next cohort of students.*
- *This involves sitting out of classes for a year, repeating the course, earning a grade of B or higher, then continuing in the program. If the student fails to achieve a B or higher, the student will immediately be dismissed from the program.*
- *This “second chance” option can only be used 1 time during the course of study. A student choosing the latter option will sign a letter of agreement of expectations and pay the new tuition rate and fees, if applicable, upon return.*
- *Students earning a grade of F in any academic or clinical course will immediately be dismissed from the program,*
- *A student entering the program with “provisional status” must earn a 3.0 GPA by the end of the first fall semester. Failure to achieve this benchmark, will result in dismissal from the program.*

Graduate faculty will review the clinical and academic progress of all students at any faculty meeting. A faculty member with a *concern and documented communication with a student* will have an opportunity to voice concerns regarding that student’s academic progress and/or performance.

At that time a decision will be made to:

- take no further action. The faculty mentor will monitor student’s progress across the curriculum.
- continue communication between faculty mentor and student.
- provide the student with a remediation program including anticipated progress and consequences if progress is not made.

### Remediation Plans - Course Content

- Students needing remediation may need to register for CSD 6379 Independent Study to cover the topic(s) needed for remediation. The instructor(s) who teaches the topic(s)

along with the Program Director will design a remediation plan with the student. After the agreed upon remediation plan is implemented and completed, the student will complete another examination.

- The student will be presented the remediation program including anticipated progress and consequences if progress is not made.
- The student will sign the remediation plan detailing anticipated progress, a timeline for completion and consequences for not meeting the requirements of the remediation plan.
- By signing, the student acknowledges that they are agreeing to the remediation plan.
- The student and Program Director will receive a copy of the remediation plan.
- If the outlined expectations of the remediation plan are not met, the student may be dismissed from the Program or offered the opportunity to start the program again the next year (one-time option).
- A student choosing the latter option will sign a letter of agreement which outlines expectations and pay the new tuition rate and fees, if applicable.

### **Clinical Expectations of Graduate Students**

Graduate students must earn a grade of at least a “B” in order to progress to the next clinical experience.

- A “C” will be considered both problematic and unsatisfactory, and clinical hours earned during that experience will not be entered into the clinical hour record.
- A grade of “C” in a practicum course is considered failing.
- If a student earns a “C” in any clinical course, that clinical must be repeated, and an “A” or “B” must be earned.
- Graduate students must earn an “A” or “B” in CSD 6301 and 6302 before they will be allowed to participate in an off-campus clinical experience.
- A student receiving a “C” in a clinical course will be placed on a remediation plan.

### **Clinical Remediation Plan**

- The student will be provided with a remediation program including anticipated progress and consequences if progress is not made.
- The student will sign a remediation plan detailing anticipated progress, a timeline for completion and consequences for not meeting requirements for remediation plan
- Upon signing the plan, the student indicates that they are agreeing to the remediation plan.
- The student, Director of Clinical Education and Program Director will receive a copy of the remediation plan.
- If the outlined expectations of the remediation plan are not met, the student may be dismissed from the Program

**Please note that repeating any classroom or clinical course will delay graduation.**

### **Summative Assessment**

Each student will complete a comprehensive exam (summative assessment). The comprehensive exam will be completed during the Fall Semester of Year 2. This will allow students an opportunity to complete any remediation needed. The comprehensive exam will cover the Big 9 (ASHA), evidence-based practice, research and interprofessional collaboration as well as current

topics in speech-language pathology. Students must achieve a passing score on the comprehensive examination.

### **Remediation Plans - Summative Assessment**

Students needing remediation for the comprehensive exam (summative assessment) will need to cover the topic(s) needed for remediation. The instructor(s) who teaches the topic(s) along with the Program Director will design a remediation plan with the student.

- The student will sign a remediation plan detailing anticipated progress, a timeline for completion and consequences for not meeting requirements for remediation plan
- Upon signing the plan, the student indicates that they are agreeing to the remediation plan.
- After a course of remediation has been completed, the student will retake the exam in written format written.
- If the student still does not make satisfactory progress, additional remediation will be required, after which an oral examination will be completed with the program director and other faculty members.
- Failing to pass the second remedial exam will result in having to repeat the course SLP 6368 when it is offered, extending the student program time and resulting in the student not being able to graduate on time.

***A student may be dismissed from the program at any time if his/her professional behavior is deemed to be out of accordance with the ASHA Code of Ethics or a threat to the safety of the patient or self.***

### **Academic and Clinical Progress**

In order to meet requirements for ASHA's Certificate of Clinical Competence (CCC) and document the knowledge and skill assessment (KASA), student records are maintained on each graduate student. The KASA guidelines decree the knowledge and skills that the SLP program expects the students to master by the time of their graduation. The SLP program will monitor and document each student's adequate progress in relation to the KASA guidelines.

<https://www.asha.org/Certification/2020-SLP-Certification-Standards/>

### **Students who speak English with Accents and Non-Standard Dialects**

In order to comply with the ASHA Code of Ethics, Hardin-Simmons University Speech-Language Pathology Graduate Program does not discriminate against students who speak English with an accent or non-standard dialect. However, it is expected that students be able to provide modeling of target phonemes, grammatical features, and any other element of speech and language that is crucial in the treatment of clients. ASHA provides this guidance on the skill of report writing: "although clinical report writing skills and competencies are critical to effective documentation, standards need not be altered for students who speak with dialects or with accents."

For more information regarding English with Accents and Non-Standard Dialects visit:  
<https://www.asha.org/policy/tr1998-00154/>

### **KASA Standards**



Students not meeting departmental requirements for acquisition of knowledge and skills must complete remediation plans as defined by the program director in conjunction with the Clinical Director, faculty members, and/or clinical supervisors. Failure to complete the remediation plan will result in dismissal from the program.

### **Students Seeking Accommodations**

Eligible students seeking accommodations should contact the Disabilities Coordinator as soon as possible in the academic term in which they are seeking accommodations. The coordinator shall prepare letters to appropriate faculty concerning specific, reasonable academic adjustments for the student. The student is responsible for delivering accommodation letters and conferring with faculty members. The coordinator shall consult with the student and the HSU faculty to ensure delivery of appropriate support services and shall serve as a liaison between the student and the faculty member/s as needed. This policy will be adhered to in the classroom setting, but, if the accommodations are not within the practice standards expected while on clinicals (for example, be able to evaluate and effectively treat within a given time frame), the student may be reassigned to a placement that can meet these accommodations.

Disability Services: <https://www.hsutx.edu/academics/academic-resources/disability-services/>

### ***Hardin-Simmons Academic Integrity Policy***

**Academic Violations will adhere to Hardin-Simmons University policies:**

<https://hsutx.smartcatalogiq.com/2022-2023/Graduate-Catalog/Academic-Policies/Graduate-Studies-Grievance-Committee>

#### **Procedures for Violation:**

1. At the point of discovery, the instructor shall inform the student of the alleged violation of academic integrity and hear his/her explanation of the circumstances. If the instructor determines there is no violation, the case is dropped. If the instructor decides the violation is unintentional or minor, the instructor may decide to require the student to rewrite the paper in question, take a modified exam, or take some similar action. If, in the judgment of the instructor, the alleged violation is deemed to be serious and intentional, the instructor will follow the procedure outlined below in steps 2–5.
2. Before imposing a penalty for a violation, the instructor shall consult with his/her immediate supervisor and together they will agree on a penalty. The instructor shall then make a written report outlining the incident and the recommended penalty. A copy of the report shall be given to the supervisor, the head of the department and the dean of the school or college in which the course is offered, the Office of the Provost, the student and the student's advisor. The instructor shall inform the student, in writing, of the right to appeal the charge of violating academic integrity.
3. From the point of discovery, and within 10 working days, the instructor shall complete the process outlined above.
4. The Office of the Provost shall maintain files of all violations of academic integrity.

The student has the right to appeal the charge of violating academic integrity and/or the penalty assessed in accordance with the following appeals process.

## **Procedure for Appeal**

1. A student appealing a charge of academic integrity violation and/or a penalty must deliver a letter to the chair of the Grade Appeal and Academic Misconduct Committee, specifying the basis for the appeal within 10 working days after receiving the instructor's written report.
2. After receipt of the letter of appeal, the chair of the committee will schedule a meeting of the committee as soon as practical, preferably within 10 working days. The chair will notify the student and the instructor of the meeting date and time.
3. Copies of the instructor's report and the student's letter of appeal will be provided to all members of the committee at least two working days before the day of the meeting.
4. The committee will review the materials submitted by both the student and the instructor before the formal meeting and convene at a time convenient for all involved for the purpose of hearing the two individuals present their cases. The committee will then convene in an executive session to reach a decision in the matter. The chair of the committee will inform, in writing, the student, the student's advisor, the instructor, the instructor's immediate supervisor, the head of the department and the dean of the school or college in which the course is offered, and the Office of the Provost of the decision.
5. If the appeal is denied, then the charge and the penalty is upheld. If an appeal of a charge of violating academic integrity is upheld, the case is dismissed. If an appeal of a penalty is upheld, then the committee will determine an appropriate penalty. The ruling of the committee is final. Action, or failure to take action, by an instructor or the Appeals Committee does not preclude disciplinary action by the University when appropriate.

## **PROGRAM COMPLAINTS**

An individual or organization that is unhappy with their experience or encounter with any student, faculty or staff member of the Speech-Language Graduate Program at Hardin-Simmons University is encouraged to file a written complaint against the department or program. The complaint must be in writing to be considered a bona fide complaint. (Grade appeals are not considered in this section but are discussed in the HSU Graduate Bulletin and under Grades Appeal in this document.) The complaint will be kept on file in the Program Director's files under "Program Complaints" for a period of 5 years.

Complaints should be addressed to:

Program Director  
Speech-Language Pathology Graduate Program  
HSU Box #16172  
2200 Hickory Street  
Abilene, TX 79698

The following outlines the process for handling a complaint against the Department:

1. When possible, the Program Director will discuss the complaint directly with the party involved within 14 business days. If possible, the matter is reconciled at this point. A letter from the Program Director acknowledging the resolution of the complaint will be filed with the complaint and a copy sent to the complainant.
2. If dissatisfied with the discussion with the Program Director, or if the complaint is against the Program Director, the involved party may submit a written complaint to the Dean of

the College of Health Professions. The Program Director will also forward a written summary of previous discussions where appropriate. The Dean will meet with each party separately and may schedule a joint appointment with the two parties in order to attempt a solution. A letter outlining the resolution by the Dean should be filed with the complaint in the Program Director's office.

3. If the party feels that an additional complaint is necessary, the last line of complaint is to the Provost/Chief Academic Officer of the University. A letter outlining the resolution by the Chief Academic Officer should be filed with the complaint in the Program Director's office.

*Students may file a complaint with the Council on Academic Accreditation (CAA) by writing to:*

**The Council on Academic Accreditation in  
Audiology and Speech-Language Pathology**  
American Speech-Language-Hearing Association  
2200 Research Boulevard, #310  
Rockville, MD 20850

For more information regarding the CAA's complaint procedures as well as a link to the complaint form, students may visit their website: <https://caa.asha.org/?s=filing+a+complaint>

## **Student Grievances**

Procedures for handling Student Grievances regarding grades can be found in the Graduate Catalog.

<http://hsutx.smartcatalogiq.com/2020-2021/Graduate-Catalog/Academic-Policies/Graduate-Studies-Grievance-Committee>

Procedures for handling student grievances (other than grades) with fellow students, faculty, or staff can be found on page 60 of the Hardin-Simmons University Student Handbook.

<https://3eroib1qr1f4ekdp93x2c2fv-wpengine.netdna-ssl.com/wp-content/uploads/2020/01/2019-20-Student-Handbook-1.10.20.pdf>

## **Application for Graduation**

### **Student Responsibility (HSU Graduate Catalogue)**

The student is responsible for knowing the degree requirements and policies listed in this catalog. The student must be sure that all required documents, fees, and credentials are submitted by required deadlines to the Office of Admission. The student should consult this catalog, his/her graduate advisor, and the dean of the school or college that houses the academic program to ensure all degree requirements are being met.

### **Office of Admission**

**HSU Box 16050  
Abilene TX 79698**

325-670-1298  
[admission@hsutx.edu](mailto:admission@hsutx.edu)

Office of Graduate Studies  
HSU Box 16210  
Abilene, Texas 79698  
325-670-1833  
[gradoff@hsutx.edu](mailto:gradoff@hsutx.edu)

## **Program Degree Requirements**

### **Student must**

1. complete the M.S. degree in Speech-Language Pathology curriculum (five semesters) 57 credit hours (41 hours of course work and 16 hours of clinical practicum) with a 3.0 cumulative grade point average.
2. earn a B or above in all practicum coursework.
3. complete 400 clinical clock hours (no more than 50 may be accepted from undergraduate clinical experiences) including 25 hours of observation with a satisfactory rating from all clinical supervisors.
4. complete the Knowledge and Skills Acquisition (KASA) form with each competency marked as acquired and certified by the program director.
5. achieve a passing score on the comprehensive examination.

### **Diploma Card**

The deadline for filing Diploma Cards in the Registrar's Office is listed in the Academic Calendar in the front of this catalog. Students filing a diploma card after this date will be charged a late fee. The student should inform the Program Director if his/her graduation date changes.

### **Participation in Graduation Exercises**

All candidates for degrees are requested to participate in the commencement ceremony. Candidates must be enrolled in all courses required to complete the degree, including Thesis and Thesis Renewal (if applicable). Incomplete grades must be completed by the deadlines of April 15 (May graduation) and November 15 (December graduation). Students with any graduation requirements not completed by these dates will be excluded from walking at their respective graduation ceremony.

### **Financial Obligations to the University**

Students are required to settle all accounts in a manner satisfactory to the university controller before a diploma will be awarded.

### **Transcripts**

Students have access to their grades and transcripts:  
<https://www.hsutx.edu/info-for/current-students/>

Additionally, the Registrar's office has full-time personnel available to provide students assistance with transcripts and other educational needs. Their department information is found at: <https://www.hsutx.edu/academics/registrars-office/>

## **TOTAL COST OF THE PROGRAM Hardin-Simmons University Policies**

### **Financial Information**

The SLP Graduate Program makes every effort to keep costs reasonable for students. However, because the Program runs continuously for 22 months, students should review their financial resources carefully and anticipate expenses realistically. During the clinical education phase, all students may be assigned to clinical sites outside of the immediate Abilene/Big Country area. The student is responsible for the costs related to out-of-area travel and housing, if applicable.

Please access the following HSU webpage for Tuition Cost & Fee:

<https://www.hsutx.edu/tuition-aid/tuition-costs-fees/>

<https://www.hsutx.edu/wp-content/uploads/2023/02/Grad-Fulltime-On-or-Off-Campus-22.23.pdf>

Please note that tuition is subject to change each year.

Student Insurance for clinical practicum will be included in your tuition.

### **Tuition, Fees and Other Expenses**

The University reserves the right to change tuition and other charges at the beginning of any semester.

*The tuition cost for a full-time course load does not include expenses for such required items such as textbooks, therapy supplies, name tag, scrubs, clinic polo shirt, student clinical software software, (i.e., CALISPO, ClinicNote, Simucase...), background checks, and CPR.*

### **Program Deposit**

There is a non-refundable \$100 deposit (subject to change) for those applicants accepted into the Hardin-Simmons Speech-Language Pathology graduate program which is applied to the tuition for the first semester upon enrollment. If an applicant accepted into the Program encounters circumstances that prevent their matriculation, any amount paid by the applicant to the University that is over and above the non-refundable deposit of \$100.00 will be refunded based on the tuition refund policy set forth by the University and outlined in the University Catalogue.

## **REFUND POLICY Tuition and Fees Refund Policy**

*Students separated from HSU due to suspension or expulsion are not eligible for refund.*

### **Individual Courses Dropped**

No tuition is refunded for individual courses dropped after the 8th day of a term (16 week Fall and Spring terms only). If a student is only taking one class, that would be considered withdrawing, and the refund policy above would apply.

### **Credit Balance**

Refunds will be processed automatically throughout the semester; however, a student may request a refund from the Business Office after aid has posted and his or her total account balance indicates a credit balance.

### **Withdrawal from the University (Dropping All Classes)**

The following refunds will be made upon complete withdrawal from the University. (Does not apply to “Dropping Individual Classes.”) This refund policy applies to **tuition only**. Any institutional loans or grants will be pro-rated along with the charges as seen below. Institutional Money should not exceed charges at the time of the withdrawal. A refund is not warranted if the credit is caused by any amount of institutional money within that semester. **Fees will not be refunded.** “Day one” refers to the official start date for the term session.

## **THE FOLLOWING SCHEDULES ARE REQUIRED BY THE FEDERAL GOVERNMENT**

Please review the HSU Refund policy:

<https://www.hsutx.edu/tuition-aid/business-office/refund-policy/>

### **Withdrawal:**

A student who desires to withdraw from the University must obtain and complete the proper forms and return to the Registrar’s Office. The student must request permission from the

### **University Financial Aid Policies:**

Financial assistance is awarded for one year at a time. Separate financial aid applications (FAFSA) must be filed each year. Application materials are available in October for the coming academic year. Financial assistance is committed only to students who are accepted into a degree program. Students applying for graduate fellowships and/or graduate scholarships must hold provisional or full admission to a graduate program.

All institutional aid, including departmental awards, are HSU-tuition-specific. The University cooperates in making funds provided by both the federal and state government available to students for grants, employment, and loans. HSU must administer the federal and state programs within prescribed regulations. All government programs are dependent on funding by federal and state governments. Awards are subject to funding by legislation and are not binding on the University if such programs are not funded.

All applications and requests for information regarding federal and state assistance should be directed to the Office of Enrollment Services, HSU Box 16050, Abilene, TX 79698.

To review HSU Financial Aid Policies – please visit

<https://www.hsutx.edu/tuition-aid/financial-aid-checklist/financial-aid-policies/>

## **Graduate Scholarships**

Graduate Students are encouraged to apply for graduate scholarships on HSU Central – Scholarship Central. For more information, please contact the Financial Aid office.

## **Veterans Benefits**

### **Veterans Affairs (VA):**

Students who qualify for VA benefits can submit their forms and questions to our VA representative in Registrar's Office 325-670-1200 or [HSUreg@hsutx.edu](mailto:HSUreg@hsutx.edu). Billing for the VA is sent the last day to register for classes in each semester.

## **Graduate Student University Resources**

Students can access the university writing center which assists students who need support (i.e., academic, professional and creative). Information about the writing center can be found at: <https://www.hsutx.edu/academics/academic-resources/academic-support-tutoring/>

National Student Speech-Language Hearing Association (NSSLHA) – Currently, we have a NSSLHA organization on our campus with a faculty sponsor. <https://www.nsslha.org>

All full or part-time students are eligible to receive free, confidential, and voluntary counseling services at HSU. Services include consultation, evaluation, counseling, and crisis support services for students facing issues impacting their overall well-being. Information about counseling services can be found at: <https://www.hsutx.edu/student-life/student-services/counseling-services/>

Research/library support from the librarian liaison for the Communication Sciences & Disorders department is available to provide library instruction. The library information can be found website at: <https://library.hsutx.edu/>

Registrar's office provides students assistance with transcripts and other educational needs. Their department information is found at: <https://www.hsutx.edu/academics/registrars-office/>

IT services and a Help Desk are available for student personal computer issues. IT services can be found at: <https://www.hsutx.edu/offices/technology-services/>

Students have ready access to the on-campus Dining Facilities with the option of purchasing a meal plan. Information at dining facilities can be found at: <https://hsutx.campusdish.com/en>

Hardin-Simmons University offers housing options for graduate students. Information concerning housing can be found at: <https://www.hsutx.edu/student-life/living-on-campus/residence-life/campus-houses/>

## Campus Housing

The university owns approximately 60 homes in close proximity to the Hardin-Simmons campus. Many of these units came from Camp Barkley and were moved to campus after WWII. The units are primarily one-bedroom duplexes and two-bedroom houses. There are also limited three-bedroom houses available.

Residents at most homes are responsible for gas and electricity, with some homes also required to pay the water/sewer. Residents are also responsible for any other services they wish to provide (phone, internet, cable). Each unit has central heat, but select homes require residents to provide their own window air conditioners. All houses have washer/dryer hookups as well as fenced-in back yards.

University-owned homes have a no-pet policy. These homes are available to any graduate, family, or any other student who may require special accommodations. Family students include any married student or student with a dependent.

Please contact [ResidenceLife@hsutx.edu](mailto:ResidenceLife@hsutx.edu) if you are interested in living in the University Place Apartments or the HSU Houses.

For more housing information can be found at:  
<https://www.hsutx.edu/student-life/living-on-campus/residence-life/>

An on-campus fitness center is available for all students. Fitness Center information can be found at: <https://www.hsutx.edu/student-life/wellness-recreation/>

The Student Life office at Hardin-Simmons University coordinates many services for students at both the undergraduate and graduate level. Some of their related services that are coordinated under their umbrella include academic coaching & enrichment, career services, campus clubs & organizations, student government, counseling, and health services. These services are described on the university website: <https://www.hsutx.edu/student-life/>

The Career Services department provides support for students and graduates at Hardin-Simmons University. Information about Career Services is available in the student handbook and includes career counseling and assessment, resume and CV reviewing services, virtual and live career fair hosting, and networking opportunity events. These services are also described on the university website at: <https://www.hsutx.edu/student-life/career-services/>

The Financial Aid office has full-time resources available to student in the graduate program and is familiar with both professional programs and graduate studies. They are available to assist graduate students as they are available to all University Students.

The department information: <https://hsutx.smartcatalogiq.com/en/2024-2025/graduate-catalog/hardin-simmons-university-graduate-catalog-2023-2024/> and <https://hsutx.smartcatalogiq.com/2024-2025/undergraduate-catalog/>

Cowboy Cash are funds students load onto their student ID to be used for residence hall laundry, the bookstore, or for food and drinks at any of our campus locations, including Gilbert's Coffee



Shop in the library. You can load any amount with a minimum of \$10. These funds do carry forward as long as you are continuously enrolled at HSU. Any unused funds at the time of graduation or separation from HSU are forfeited.

## **Texas State Licensure**

### **Texas Licensing Requirements for Audiologists and Speech-Language Pathologists**

“The information below is collected from state licensure boards or regulatory agencies responsible for regulating the professions of speech-language pathology and/or audiology. The information is reviewed on an annual basis. Please be advised that laws, regulations, and policies may change at any time, so always check with your state for the most up-to-date information.

**Initial Licensure** (information provided by ASHA  
<https://www.asha.org/Advocacy/state/info/TX/licensure/>)

#### ***Speech Language Pathology***

- Master's degree from a program accredited by a national accrediting organization approved by the Board and recognized by the U.S. Secretary of Education in an accredited college or university; if institution not CAA accredited must send letter from ASHA stating the Council for Clinical Certification has accepted the course work and clinical experience.
- 400 hours supervised clinical practicum.
- 36 weeks of full-time or equivalent part-time supervised professional experience.
- Passage of an examination.
- All applicants must submit proof of successful completion of the jurisprudence examination at the time of application. The jurisprudence examination must be completed no more than six months prior to the date of licensure application.
- The Board may waive the clinical and examination requirements and grant licensure to a CCC holder.

**NOTE:** *In Texas, it is against the law to practice as an audiologist or speech-language pathologist without a license.*

#### **HA – Texas Licensing Information:**

<https://www.asha.org/Advocacy/state/info/TX/licensure/>

#### **TDLR-SLP**

<https://www.tdlr.texas.gov/slpa/slp-license-apply.htm>

#### **State Licensure**

ASHA provides a state-by-state guide for licensure of each state.

<https://www.asha.org/advocacy/state/>

#### **Certification in Speech-Language Pathology** (information provided by ASHA)

## Applying for the CCC-SLP

“If you have graduated from a program accredited by the Council on Academic Accreditation in Audiology and Speech-Language Pathology (CAA) or from a program with CAA-candidacy status, you may submit your online application any time after completing the necessary coursework and graduate clinical practicum, and after receiving confirmation from your program director that the requirements in Standards I–V have been met...”

A completed application includes your dues and fees payment.

**Important!** *“All academic coursework and clinical practicum must be completed before beginning the Clinical Fellowship (CF) experience. If any coursework or practicum is incomplete, which includes all prerequisite (i.e., basic biology, chemistry, or physics, etc.) and core coursework, the hours completed toward your CF experience will not count toward your minimum 1,260 hours.*”

## Additional Required Documents

To complete your online application for certification, you must also submit the following documents.

- Passing Praxis exam scores (sent directly to ASHA from ETS).
- Official graduate transcript\* which verifies the date and degree awarded (may arrive directly from institution).
- Speech-Language Pathology Clinical Fellowship (SLPCF) Report and Rating Form report through your online application portal.
- Disclosure documents: If you checked yes to a disclosure question on the application, please review the requirements for certified copies of court or other legal documents.”

For more information: <https://www.asha.org/certification/slpcertification/>

## Praxis Scores and Score Reports

([https://www.asha.org/certification/praxis/praxis\\_scores/](https://www.asha.org/certification/praxis/praxis_scores/))

The **Praxis Examination in Speech-Language Pathology (5331)** is an integral component of ASHA certification standards. The development of the exam is commissioned by ASHA and facilitated by the Educational Testing Service (ETS) to provide a system of thorough, fair, and carefully validated assessments.

The speech-language pathology Praxis exam is owned and administered by ETS as part of The *Praxis II*®: Subject Assessments; however, ASHA's [Council for Clinical Certification in Audiology and Speech-Language Pathology](#) (CFCC) appoints subject matter experts, makes a final determination for the passing score, and reviews [Praxis Exam Policies](#) [PDF] for fairness. (

The [current passing score for purposes of ASHA certification](#) is **162** (on a 100–200 scale).

## Passing Scores

[Current passing scores](#) for purposes of ASHA certification:

- Audiology (5343): **162\***
- Speech-Language Pathology (5331): **162**

\*ASHA will continue to accept a passing score on the Praxis test (both the 5342 and 0342 test codes) if this version is required by your state's licensing agency. The passing score on this version of the test is 170.

*Understanding Your Praxis Scores:* <https://www.ets.org/praxis/site.html>

**Hardin-Simmons University**  
**Speech-Language Pathology Graduate Program**

I have participated in the Fall Orientation (Boot Camp) and have read and reviewed the Hardin-Simmons University 2024-2025 SLP Graduate Student Handbook. I understand all the academic expectations, policies, and procedures.

I understand that failure to abide by the policies and procedures of the Student Handbook and meet academic expectations could result in one or all of the following:

- remediation
- dismissal from the program

Print Name: \_\_\_\_\_

Date: \_\_\_\_\_

Signature: \_\_\_\_\_

Date: \_\_\_\_\_

## **PROFESSIONALISM & ETIQUETTE DURING ONLINE MEETINGS**

The Hardin-Simmons University Graduate Speech-Language Pathology prides itself on developing professionals. With the changing classroom delivery platforms, ensuring professional development and behavior is critical.

Below you will find some important guides to ensure you are developing and maintaining professional behavior during online lectures. Please remember that our esteemed guest lecturers (and core faculty) work very hard to provide you with an excellent education, and many of them sacrifice time away from their work and families to teach you.

Kindly follow these important guidelines:

### **Please do not eat meals during Online Sessions**

Eating can be very distracting to other students and lecturers. Please make sure you eat beforehand. Small bite-size snacks are allowed.

### **Please sit in a chair, do not sit in bed**

Please make sure that you are not laying down or in bed. Online sessions work best when everyone is upright and engaged.

### **Be dressed as if you are going to class**

Please dress as if you will be physically inside a classroom. Avoid wearing clothing that would be inappropriate for the classroom setting. While attending class in your pajama bottoms is a tempting option, you'll want to make sure that you are presenting yourself in the best possible light at least from the waist up.

### **Keep your video on**

Because of the nature of online interactions, we want to be able to engage as much as possible. This means that we want to see your face! Lecturers really enjoy engaging with students while being able to their faces. It is very challenging to lecture to blank screens.

### **Scan your environment**

Be sure you are aware of the view from your camera display. Avoid sitting in areas that are distracting. For privacy reasons, many people like using backgrounds. If you do use one, please make sure it is not overly distracting or inappropriate.

### **Mute your microphone**

Once you log in to the virtual classroom, be sure to mute your microphone (lower left- hand corner). This will help to eliminate background noise that could distract others. Remember to unmute if you have a question or comment (both of which are highly encouraged!)

### **Be in the moment**

Make sure that you are fully present, engaged, and listening to the lecture. Others can easily tell if your attention is elsewhere.

**Limit distractions**

Turn off notifications, close or minimize running apps, and mute your smartphone during the Online Meetings. Do not text or use your phone – this will infer that you are not engaged, and the behavior is distracting to others.

**Avoid multi-tasking**

You will retain the discussion better if you refrain from replying to emails or text messages during the meeting. Do not complete other assignments or study for upcoming tests until after the Online session ends.

**Be prepared**

Prepare for the upcoming class/discussion. Complete the required reading assignment and be ready to participate in the class with comments or questions. If you will be sharing content during the session, make sure you have the files and/or links ready to go before the meeting ends.

**Friendly reminders**

If the Zoom session is to be recorded and the Course Director/Instructor has not started the recording, please help to remind them to start the recording before the lecture begins. We recommend you take notes in case the Online recording fails.

*Thank you for working with us to help create a positive environment for everyone!*

*The above has been adapted from the following sources:*

- *Sherwin B. Nuland Summer Institute in Bioethics. "Professionalism & Etiquette During Zoom Meetings". Announcement posted by Lori Bruce. Accessed July 9, 2020.*
- *University of Pittsburgh. Information Technology. "Zoom Meetings: Etiquette and Best Practices". Accessed July 9, 2020.*
- *DePaul College of Education. "5 Easy-to-Follow Etiquette Rules for the Zoom Classroom". Accessed July 9, 2020.*