



# ABILENE HALL

*Expanding the legacy and providing a home for our new engineering program*

As one of the oldest buildings on campus, Abilene Hall has long been a centerpiece of life at Hardin-Simmons University. While the memories will live on through the structure of the building, Abilene Hall will take on a new purpose and new form to house HSU's engineering program, opening in the fall of 2023.

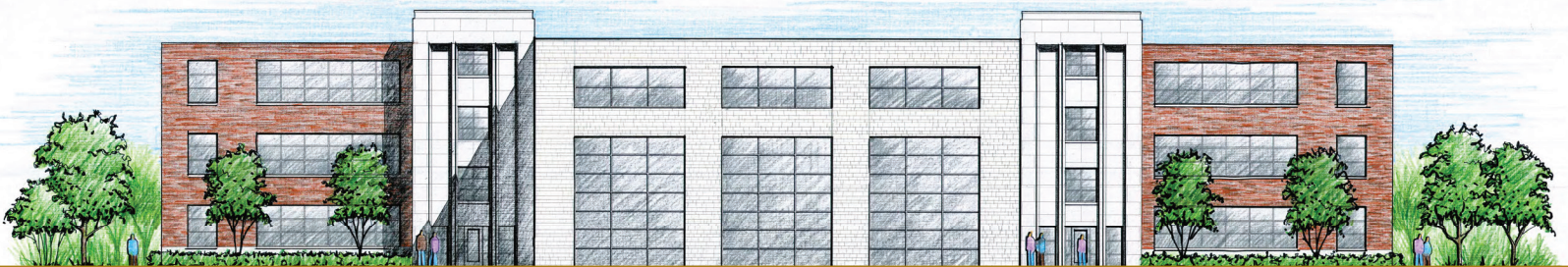
Though the legacy of individualized programs and the characteristics of HSU's quality instruction will continue, Abilene Hall's remodel and expansion will allow HSU engineering graduates to stand apart from their peers. The building will expand the front facade by a total of 2,000 sq. ft. on each floor, giving a total of 7,900 sq. ft. of lab space and 6,700 sq. ft. of academic space on the first two floors. This addition will provide a new space to accommodate the unique needs of the engineering program on all three floors of Abilene Hall.

Each room is being carefully crafted to provide students with the tools they need to gain an education enlightened by Christian Faith and succeed in the engineering industry upon graduation. Wind tunnels, 3D printers, universal testers, and plasma tables are all part of the laboratory and design learning experiences that will match the quality of any engineering program in Texas.

"The mission of the program will be to provide an intimate and hands-on engineering education that is both technically proficient and socially minded," shared Matt Jackson, Ph.D, P.E., Dean of the Holland School of Sciences and Mathematics at HSU and the inaugural Director of Engineering. We are excited to implement our mission into another program and watch as HSU engineering graduates lead the way in the Big Country and beyond.



(Top) Former research students of Dr. Jackson using a 3D metal printer and (bottom) tensile testing the materials printed to determine their strength



**HARDIN-SIMMONS**  
UNIVERSITY

# MEETING *the* GROWING NEED *for* EMPLOYMENT *in* MECHANICAL ENGINEERING

APPROXIMATELY  
**2,200** SQ.  
FT.  
ADDED TO EACH FLOOR

**3** DISTINCT  
LABS:  
MATERIAL TESTING LAB  
FABRICATION LAB  
FLUID DYNAMIC LAB

**RENOVATED  
OFFICE SPACES &  
LECTURE HALLS**

**COMPUTER  
LOUNGE &  
DATA CENTER**

**THIRD FLOOR**  
RESERVED WITH THE  
GOAL TO GROW  
INTO THE SPACE

“

I believe that HSU is uniquely positioned both within Abilene and the surrounding region, as well as within the context of smaller faith-based institutions, to see strong growth and make a significant impact. ”

**Matt Jackson, Ph.D, P.E.**

*Dean of the Holland School of  
Sciences and Mathematics and  
Inaugural Director of Engineering*



Meet Dr. Jackson and watch as he describes HSU's upcoming mechanical engineering degree.

